

Applications Data

SOLUTIONS DRIVEN

TOLL FREE IN THE U.S.
800.235.6371

WORLDWIDE: 864.235.6371

FAX: 864.232.7828

THECLINECO.COM

E-MAIL: SALES@THECLINECO.COM

#100-1

Provide sketch or drawing of application and attach to this data sheet if necessary.

Name, address, phone, fax and e-mail:

Special Instructions/Notes:

Qty of driveshafts needed (if different application details, supply data sheet for each):

When is quotation required?

Time frame for delivery after receipt of order and approvals?

PRIME MOVER DATA

Driver Horsepower:

Application Horsepower Requirement:

Driver Speed (RPM):

Gearbox or Transmission Ratio (if applicable):

Driveshaft Speed (RPM):

Operating Length:

Vertical Offset:

Horizontal Offset:

Equal or Unequal Angles:

Driveshaft Bearing B10 Life Hours Requirement:

Shaft diameters or flange details to be connected:

Driver

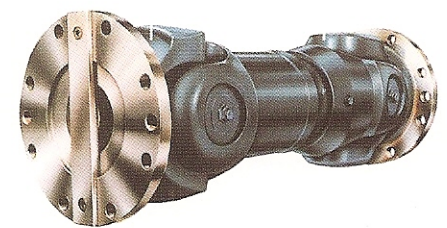
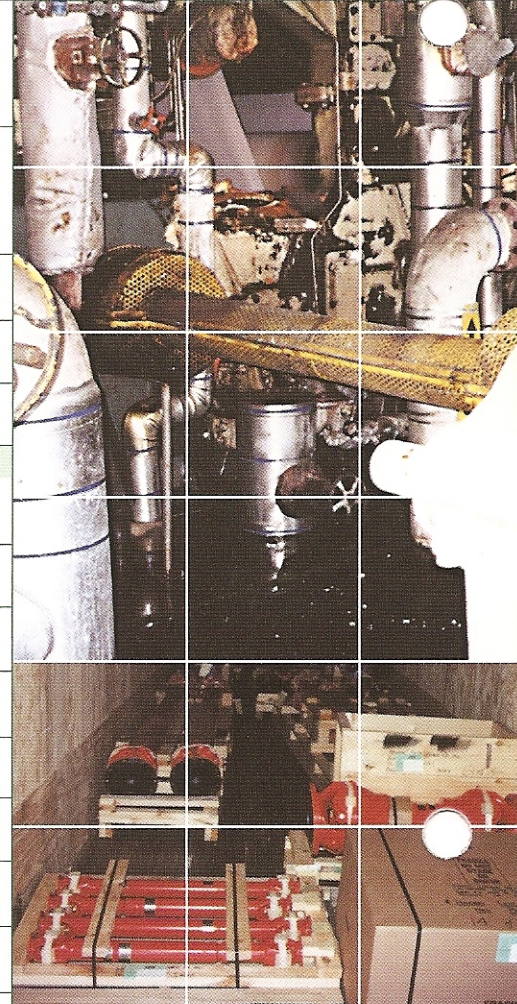
Driven

Shaft Size (IN):

Key Seat (IN):

Usable Length (IN):

Sketch of Application Arrangement:



Service Know-How

Generally speaking, most manufacturers of U-joints suggest inspection and relubrication every 3 months, or every 1,000 hours of operation, whichever comes first. In severe operational environments this interval should be decreased. Consult your Cline Company representative for specific maintenance and lubrication questions or assistance.

**No Matter the Part Number or the Problem,
We've Got Your Solution.**

